

# Welcome, Class of 2030!



*Please complete this contact sheet to receive  
MLWGS communication*

# Introductions

[www.mlwgs.com](http://www.mlwgs.com)



# Tonight's schedule

- **Governor's School Foundation and PTSA**
- **Auditorium**
  - Freshman scheduling basics
  - Summer reminders
- **Cafeteria/Commons**
  - *30-min. rotation*
  - Clubs, sports, and activities
  - Parent organizations
- **Gym**
  - *30-min. rotation*
  - Academic advising
  - Community Service info





**Maggie L. Walker**  
**GOVERNOR'S SCHOOL**

*for Government and International Studies*

FOUNDATION

# The Governor's School Foundation

**Ginger O'Neil**  
*Executive Director*  
*(Parent '17 & '19)*





**Maggie L. Walker**  
**GOVERNOR'S SCHOOL**

*for Government and International Studies*

FOUNDATION

The Governor's School Foundation partners with parents, alumni, and the broader community to ensure that MLWGS students have access to educational experiences and opportunities that allow them to reach their full potential.

## At MLWGS, your donation funds



FINANCIAL AID



INSTRUCTIONAL  
ENHANCEMENTS



TEACHER  
DEVELOPMENT



STUDENT TRAVEL



AND MORE!

**Every dollar makes a difference!** When you give to the Governor's School Foundation, you open doors. Your gifts unlock opportunities and remove financial barriers to ensure every student can reach their full potential.



[mlwgsfoundation.org/donate](https://mlwgsfoundation.org/donate)



**Maggie L. Walker**  
**GOVERNOR'S SCHOOL**  
*for Government and International Studies*  
FOUNDATION



**Maggie L. Walker**  
**GOVERNOR'S SCHOOL**

*for Government and International Studies*

FOUNDATION

**We're Here for You!**  
**We Look Forward to Partnering with You!**



**Check us out!**

***[www.MLWGSFoundation.org](http://www.MLWGSFoundation.org)***

**Click on Stories and Blog for lots of great info  
about MLWGS and more!**

**IG: @mlwgsfoundation**

**Facebook: MLWGS Foundation**



# Maggie L. Walker Governor's School PTSA

Dr. Ben Nelson-Pearson, President





## MLWGS' PTSA

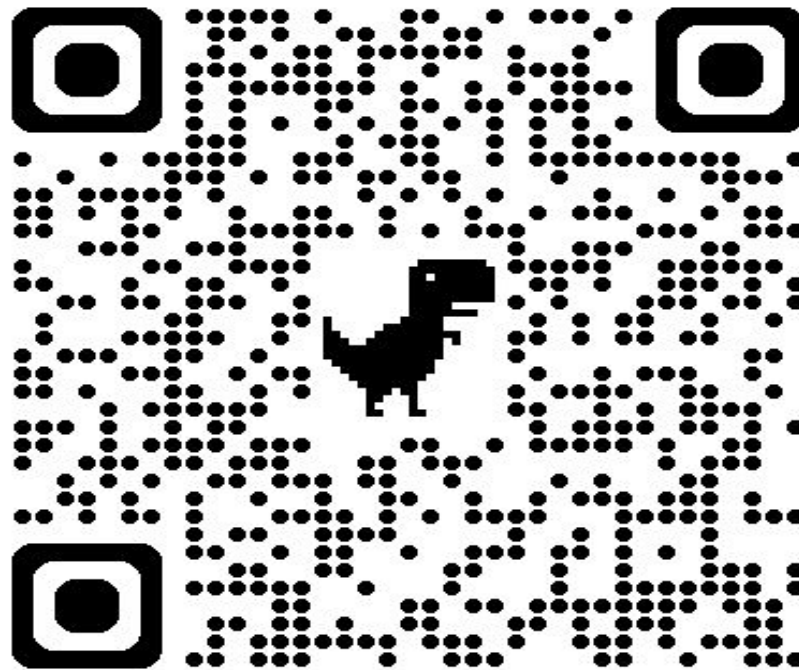
- The Largest MLWGS Community Organization
- **Everyone belongs in the PTSA: Students, Parents/Guardians, Everyone who believes in our mission**
- Supports Every Student Group, Faculty Staff, Students
- Recruits and Organizes Volunteers
- Largest Advocacy Team in Virginia
- Goal 100% Membership
- Join Today for the 2026-2027 School Year!

Follow us on Instagram @mlwgs\_ptsa  
Email questions to: [president@mlwgsptsa.org](mailto:president@mlwgsptsa.org)



# Maggie L. Walker Governor's School PTSA

Join Your PTSA



# Counseling Welcomes the Class of 2030!



Our Counseling Team  
Rising Freshman Contact Email  
[beadragon@gsgis.k12.va.us](mailto:beadragon@gsgis.k12.va.us)

# Skills Assessment

- **Make-up assessments will occur on Tuesdays till May 12, except April 28th,**
  - **Tentative Schedule**
    - **3:30 - 3:50 pm: Students Arrive**
    - **4pm: Math Assessment**
    - **5:15 pm: Language Skills Assessment (French, Latin or Spanish)**
- **Please complete sign up via the QR code near you or email [BeADragon@gsgis.k12.va.us](mailto:BeADragon@gsgis.k12.va.us)**

# Skills Assessment

- If your child has not completed their assessment, please complete the course registration from:
  - For math: **only** put the honors level math course
  - For languages: **put the current language level** that your child is taking, **if** your child wishes to continue in the same language.
- In the Gym, visit the International Languages table, Math table, or Fine Arts table for questions and placement results.

# Freshman Schedule Breakdown

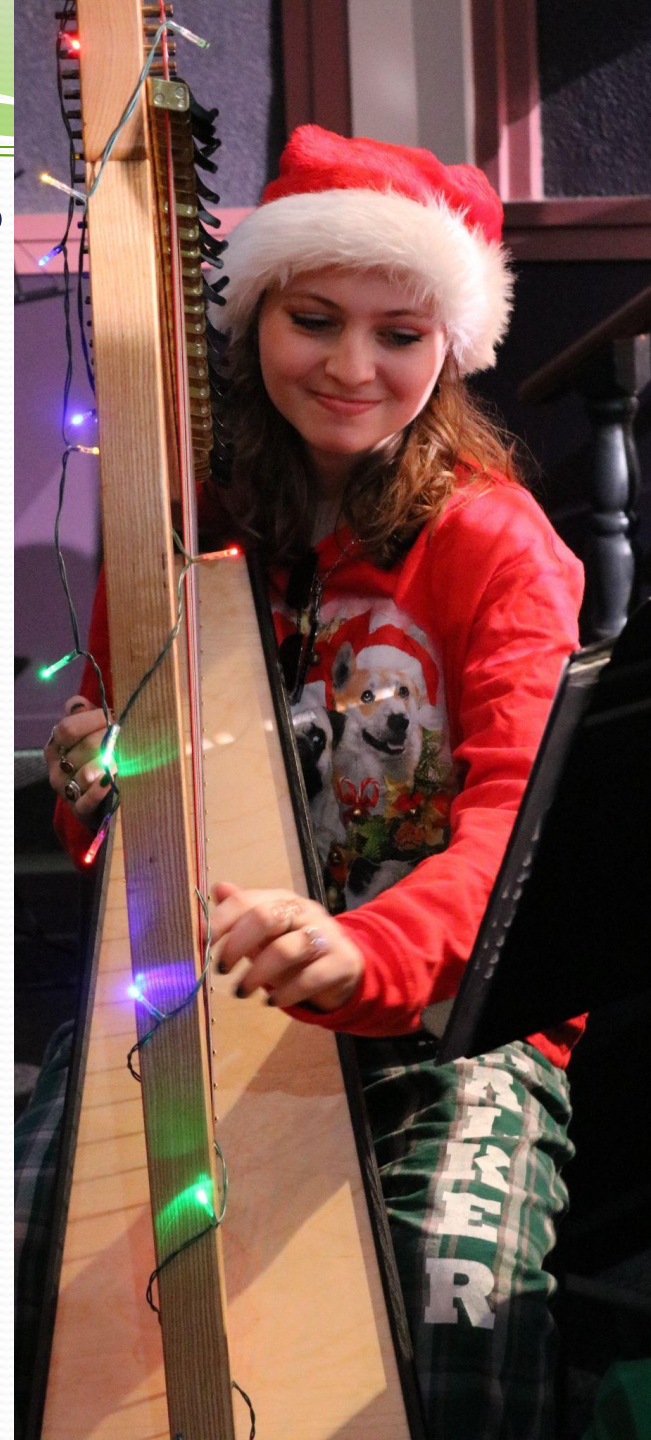
## (8 periods total)

- **7 mandatory classes:**
  - World Lit 9
  - Global Studies 9
  - MLWGS 101
  - Biology
  - PE 9\*
  - a Math class
  - a 4-year International Language class:  
Chinese, French, Spanish, German, or Latin
- **One elective course based on student preference. See list of options. This may be a study hall.**



# Elective Class Options

- **Visual and performing arts**
  - Art 1, 2, 3, 4, 5
  - Chorus
  - Drama
  - Digital Art
  - Photography in the Fine Arts
- **English Electives:**
  - Yearbook, Drama
- **Study Hall (Independent Study)**
- **2<sup>nd</sup> Language (any of nine):**
  - Arabic      ○ Japanese
  - Chinese      ○ Latin
  - French      ○ Russian
  - German      ○ Spanish
  - Italian



# PE Class Option

- All freshmen must take PE 9 with Maggie Walker.
- There is an online option with limited space.
- Students will be selected via lottery by registering with the QR code. Please complete the QR code to register for the lottery.



# Freshman Scheduling Tips

- All students must register for 8 classes (one class may be a study hall).
- Students may drop a class during the first 6 weeks if unsure about study hall need (about 30% of 9<sup>th</sup> graders take one).



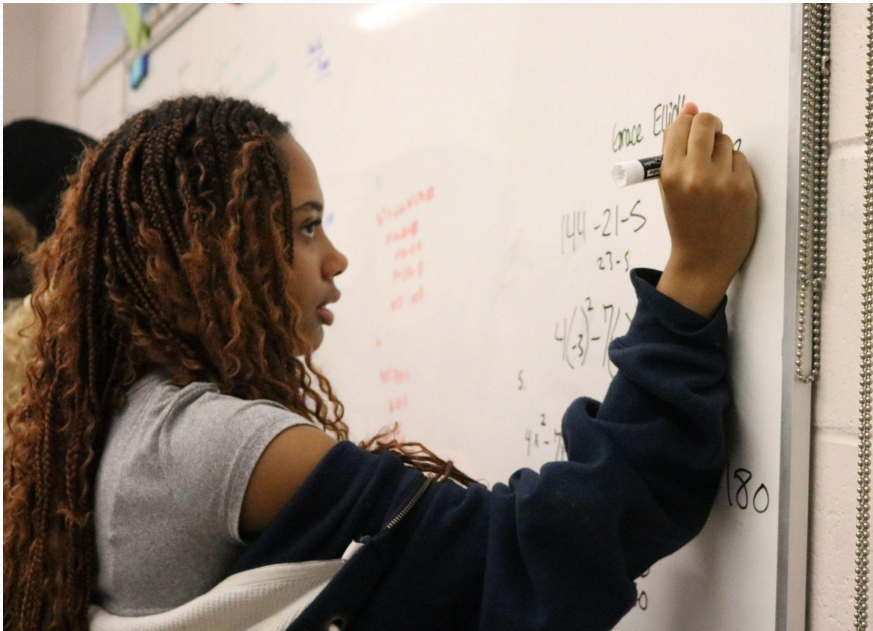
# Middle School Credits

**Middle School credits may transfer to MLWGS in the following ways:**

- **Math - credits transfer (skills assessment test required)**
- **World Language - credits transfer (pending placement test, students may advance to next level)**
- **Science - Earth Science may transfer as elective science.**
- **Social Studies - World History I or Geography may transfer as general elective credit only; students are still required to take their 5th social studies at Maggie Walker.**
- **Fine Art - Art I (or other high-school level fine art credit) may transfer as general elective credit; students must take their one required art credit at Maggie Walker but may still place into Art II.**

# Freshman Scheduling Tips

- **MLWGS accepts summer school credit only for Econ/Personal Finance (normally taken after freshman year).**
- **In the Gym, visit International Languages, Math, or Fine Arts if you have placement questions.**



# Summer Reminders



# Summer Reminders

- Summer reading: None
- Plus Math (Algebra/Precalculus): check school website for assignments during the 1<sup>st</sup> week of June
- Community service: Start this summer! Max 35 hours per activity per year, 140 hours total required over four years
- Sports begin Aug. 3rd: physical required, [www.mlwgs.com](http://www.mlwgs.com)
- Look for early-August emails
- Attend Freshman Orientation - August 17-18



# Community Service

- **Les Cook, Community Service Coordinator**  
([tcook@gsgis.k12.va.us](mailto:tcook@gsgis.k12.va.us))
- **Students may start contributing hours as of 6/10/26**
- **Working towards 140 hours over 4 years (70 can be earned on campus)**
- **Log all hours using the paper verification form found on the Community Service page on the MLWGS website.**
- **During Freshman Orientation, students will be given instructions on how to upload their hours onto their x2vol accounts, our community service storage application.**
- **DO NOT CREATE YOUR OWN x2vol ACCOUNT. This causes problems later.**
- **A list of previously used organizations is located under the Community Service tab on the MLWGS website.**



# Technology Information

- Visit our website for updated information on our **Freshman 1:1 Device Program!**
  - <https://mlwgs.com/technology/>
- Class of 2030 Technology Orientation:
  - *Tuesday, August 18, 2026*
- For all Technology questions:
  - [techsupport@gsgis.k12.va.us](mailto:techsupport@gsgis.k12.va.us)



**Stop and see us in the Gym to complete your Device Loan Agreement tonight!**

# In the Cafe/Commons

- **Group One** visits the cafeteria from 6:30 to 7:00. Please do not proceed to gym before 7:00.
- Visit tables with members of clubs, sports, activities
- Buy school merch at the Lair
- **Group Two:** when finished, you're free to go!



FOOD SERVICES

CLUBS

CLUBS

Extra Furniture

Exit for Group B

Robotics  
Foundation/Boosters  
Dragon Lair Satellite

Entrance/Exit  
for Group A

Extra Furniture

# Cafe/Commons

CLUBS

CLUBS

CLUBS

DRAGON'S LAIR

CLUBS

HELP

CLUBS

VENDING

RESTROOMS

Entrance for Group B

# In the Gymnasium

- **Group Two starts here at 7:00**
- **Students will:**
  - **Visit with academic departments**
  - **Ask questions about course selection**
  - **Obtain signatures for upper-level classes**
  - **Get ideas for Community Service**
  - **Complete 1:1 Device Loan Agreement**
  - **Required: Drop off course form at Counseling Department table**
  - **Rotate to Cafeteria/Commons at 7:00.**



# Bleachers

Social  
Studies

MWTech

Counseling  
Help

COMM  
SERV

FINE  
ARTS

FINE  
ARTS

English

INT'L  
LANG

INT'L  
LANG

INT'L  
LANG

## Gymnasium

OPEN FOR  
FILLING FORMS

OPEN FOR  
FILLING FORMS

COUNSELING  
CHECKOUT

MATH

Science

Entrance &  
Exit for Group  
A

Entrance for  
Group B

# Thank you!

Please complete  
this contact sheet  
to receive  
MLWGS  
communication

